

Building markets

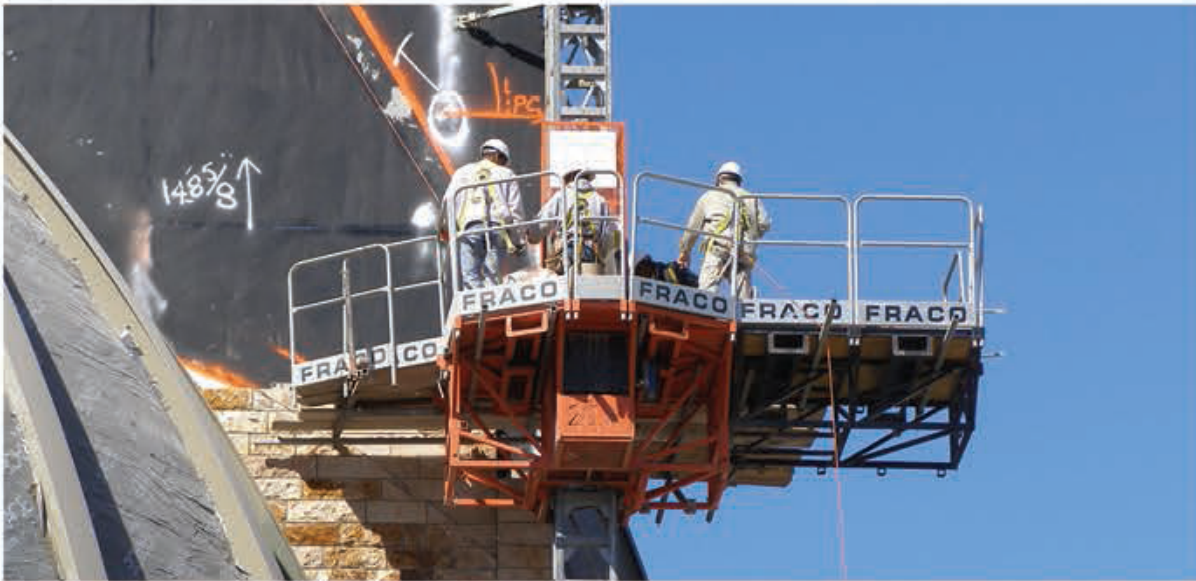
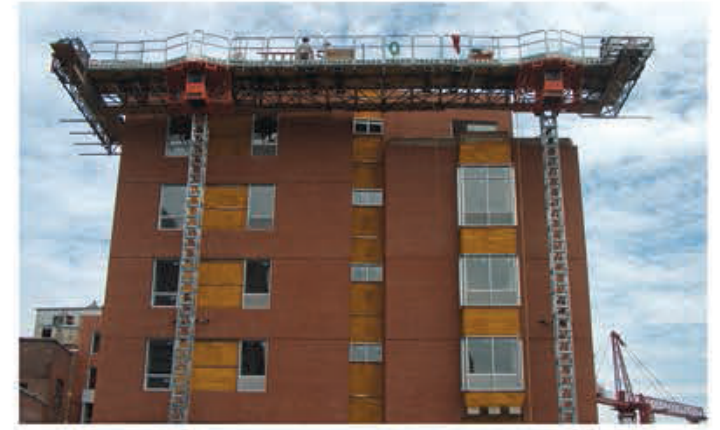
MAST GUIDED ACCESS EQUIPMENT



FRACO

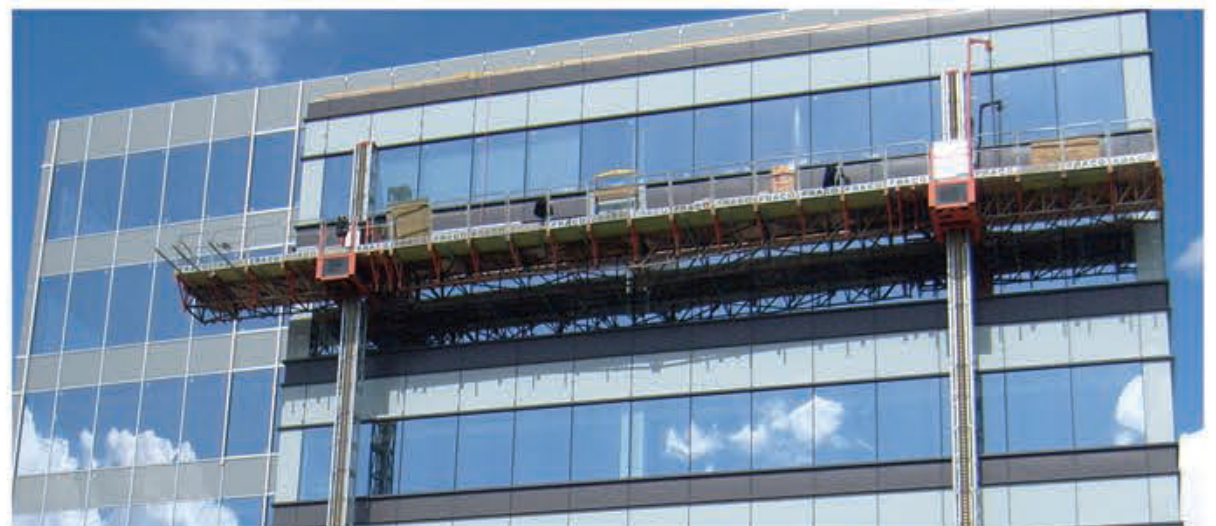
MASONRY & BRICKLAYING

Fraco has been serving the masonry market for two decades. Its expertise as supplier of mast climbing work platforms has been demonstrated through several multi residential, commercial, and institutional projects. Whether it is for hotels, condominium buildings, hospitals, schools, churches or retail stores, Fraco has always listened to masonry contractor's specific needs and responded by designing and manufacturing products strong enough to satisfy masons requirements. Fraco is also the only manufacturer to propose a work platform ideal for masons as it offers a payload of 150 lbs (68 kg) per linear foot and an even distribution of the material on the platform.



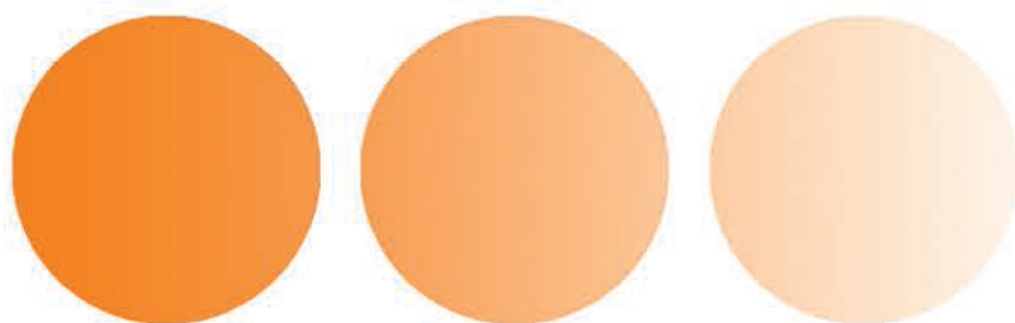
GLAZING & CURTAIN WALLS

Fraco provides vertical access solutions for installation of glass panels and curtain walls. From the vertical and horizontal mullions installation to the final capping, our mast climbing work platforms get you where you need to be and help reduce labor costs. Fraco products improves production schedules, increase effective handling and minimizes material breakage. Larger glass panels and curtain wall systems can be positioned by using our accessories such as the monorail system. Horizontal positioning and vertical adjustment of panels are made easy by using other accessories. Finally, our mast guided access systems will help eliminate your reliance on costly jobsite tower cranes to get material up to the floors.



RESTORATION & DECONSTRUCTION

New trends such as sustainability, green method of building and life-cycle extension have brought Fraco to provide safe environment for restoration and deconstruction works. Whether it is for complete or partial demolition, for waste reduction of construction materials, for asbestos removal or building recycling, our mast climbing work platforms represent the perfect solution to vertical access. Fraco's mast climbing work platforms fit all structural configurations. Ideal for building envelope rehabilitation, they offer a large workspace and a heavy payload capacity. Platforms can support excavators equipped with hydraulic hammer, crusher or shears and other robots and construction equipment. Productivity is guaranteed.



EXTERIOR INSULATION & FINISH SYSTEMS

When correctly designed and executed, exterior insulation and finish systems (EIFS) have the potential to save money in construction costs and contribute toward energy efficient operations and environmental responsibility. Even if EIFS does not include wall framing, sheathing, flashings, caulking, water barriers, windows, doors, and other wall components, EIFS contractors has been forced by architect's specifications to carry out that work as well. In some circumstances, traditional access equipments are not adapted to the concerns of general contractors for a unique access system that will be used by different specialized contractors. Over the years, Fraco products have evolved in such a way that they can adjust to different kind of needs for the most challenging construction projects.



METAL WALL PANEL SYSTEMS

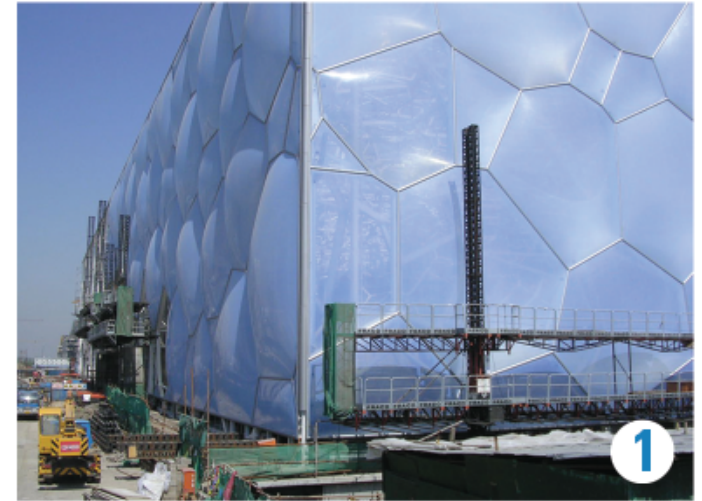
Concerns for advanced thermal and moisture protection properties have emerged over the last 15 years in the building construction. Considerations such as lowering a building's initial construction cost while improving energy efficiency over the life of the building, and architectural challenges, have brought the need for innovative products. Whether it is for fixing exterior wall cladding systems or for the installation of complex metal panel systems, Fraco has adapted to these phenomena by supplying a range of access equipment that distinguish by their flexibility and adaptability.

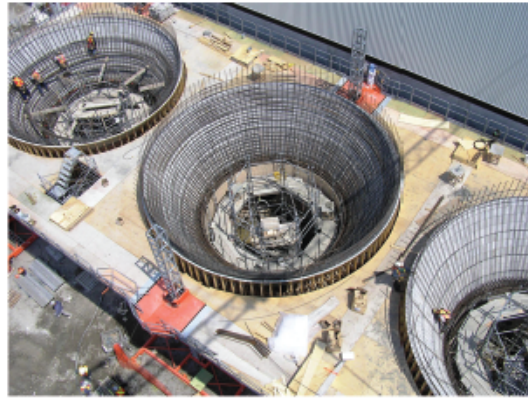


PRESTIGIOUS PROJECTS



- 1-National Swimming Center "Water Cube" Construction, Beijing, China
- 2-National Swimming Center "Water Cube" Construction, Beijing, China
- 3-Pentagone Building Reconstruction, Washington, DC, USA
- 4-Pentagone Building Reconstruction, Washington, DC, USA
- 5-NASA Assembly Vehicle Building Repair, Cape Canaveral, FL, USA





Fraco Products Ltd is a manufacturer of mast guided access equipment such as work platforms, construction elevators, industrial lifts, transport platforms and material hoists, and other specialized platforms.

Fraco products are specifically designed for building construction applications such as masonry and bricklaying, glazing and curtain walls installation, metal wall panel systems, exterior insulation & finish systems restoration & deconstruction. On the other hand, products are also used for non-building structures markets such as infrastructure works (construction and repair of bridges and overpasses), power generation sector (chimney demolition, repair of hyperbolic cooling towers and dams), other industrial construction (storage tanks and silos), and the mining industry.

Over the years, Fraco has earned a solid reputation in developing tailor-made access systems for special projects. The company serves markets in North America, Europe, Middle East and Asia.



FRACO